

Revolabs HD Single/Dual Channel System — Tandberg Edge 75/85/95 Setup Guide

This setup guide will guide you through the steps needed to properly connect a Revolabs HD Single or Dual Channel System to a Tandberg Edge 75/85/95 video codec.

Note: *It is important to carefully follow these instructions in order and completely. Otherwise your Revolabs Microphone System and/or the video codec may not function properly. Please read through these instructions completely before proceeding. Contact Revolabs technical support if you have any questions.*

Requirements for connecting systems:

1. Revolabs HD Single or Dual Channel System
2. Tandberg Edge 75/85/95 video codec
3. QTY 1 3.5mm balanced male to XLR male cable*

* 07-35MBTOXLR-01 3.5mm balanced male to XLR male cable available from Revolabs

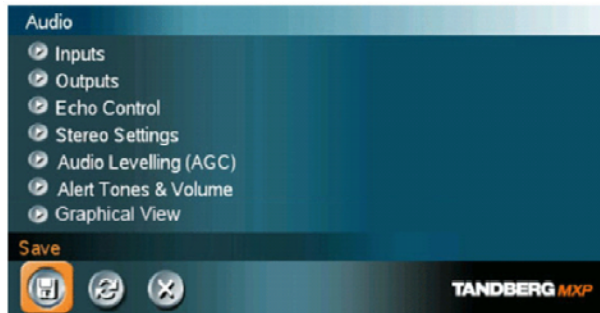
NOTE: IMAGES OF SET UP SCREENS ARE DEFAULT SETTINGS FROM TANDBERG AND ARE PART OF THE TANDBERG MXP ADMINISTRATOR'S GUIDE © MAY 2008

Connecting the Cables

1. Connect the 3.5mm stereo male cable to the CH 1 OUT port on the Single or Dual Channel System. If using a Single Channel, DIP Switch #1 should be "OFF". If using a Dual Channel, DIP Switch #1 should be "ON".
2. Connect the XLR male cable into the Tandberg MIC 1 port
3. Verify that DIP Switch #3 (mic/line) is "ON"



Configuring the Tandberg Edge 75/85/95 Video Codec



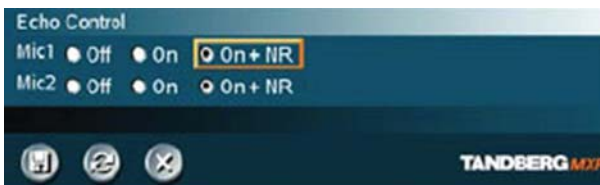
1. Go to **AUDIO SETTINGS**
2. Select **INPUTS**



3. Confirm that **MIC 1** is **ON**



4. Adjust the audio Input Type Level if necessary (Recommend +8dB)
5. Speak into the Revolabs microphone that is connected to MIC 1. The audio meter should peak at about 5dB for normal speech.



6. Return to previous menu and select **ECHO CONTROL**
7. Enable **MIC 1 Echo Canceller (ON)**



8. Return to previous menu and select **AUDIO LEVELING (AGC)**
9. Turn MIC Audio Leveling (AGC) **OFF**

NOTE: IMAGES OF SET UP SCREENS ARE DEFAULT SETTINGS FROM TANDBERG AND ARE PART OF THE TANDBERG MXP ADMINISTRATOR'S GUIDE © MAY 2008